

NC-100 (Count Only)

NC-200 (Count, Speed & Classification)

PORTABLE TRAFFIC ANALYZER



PORTABLE TRAFFIC ANALYZER

OVERVIEW

The NC-100/200 Portable Traffic Analyzer is a self-contained unit that monitors traffic flow conditions around the clock, providing the data you need for accurate traffic analysis. Utilizing Vehicle Magnetic Imaging technology, the NC-100/200 records traffic conditions and exports them to Highway Data Management Software (HDM) for fast generation of charts, reports, histograms and graphs.

FEATURES AND BENEFITS

- ▶ Easy and fast installation in roadway
- ▶ Durable extruded aluminum housing
- ▶ Long life, rechargeable, Lithium-ion battery
- ▶ 13 length classification bins
- ▶ No tubes, loops and chains

APPLICATIONS

- ▶ Multi-Lane Highways
- ▶ City Streets
- ▶ Intersections & Turn Lanes
- ▶ Unimproved Road
- ▶ Construction Zones
- ▶ State & Recreational Parks
- ▶ Casinos & Sports Arenas
- ▶ Airports
- ▶ Military Bases
- ▶ Parking Lots & Garages

HDM SOFTWARE

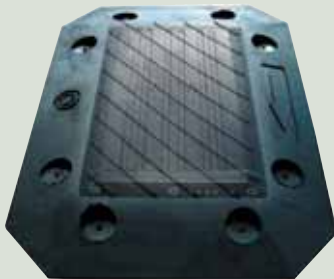
Index	ID	Location	Street	City	State	Lane	Start Date	End Date
1	100	100	100	100	100	100	100	100
2	101	101	101	101	101	101	101	101
3	102	102	102	102	102	102	102	102
4	103	103	103	103	103	103	103	103
5	104	104	104	104	104	104	104	104
6	105	105	105	105	105	105	105	105
7	106	106	106	106	106	106	106	106
8	107	107	107	107	107	107	107	107
9	108	108	108	108	108	108	108	108
10	109	109	109	109	109	109	109	109
11	110	110	110	110	110	110	110	110
12	111	111	111	111	111	111	111	111
13	112	112	112	112	112	112	112	112
14	113	113	113	113	113	113	113	113
15	114	114	114	114	114	114	114	114
16	115	115	115	115	115	115	115	115
17	116	116	116	116	116	116	116	116
18	117	117	117	117	117	117	117	117
19	118	118	118	118	118	118	118	118
20	119	119	119	119	119	119	119	119
21	120	120	120	120	120	120	120	120

Quixote
Transportation Technologies, Inc.

WWW.QTTINC.COM

QTT NC-100 and NC-200 SPECIFICATIONS

Housing Material:	Extruded/anodized aluminum	Roadway Occupancy:	Percent occupancy over report interval
Ultimate Bearing Strength:	88,000 psi (607 MPa)	Count Period Frame Mode:	1 to 120 min
Dimensions:	7.5 in. x 4.625 in. x 0.5 in. (190.5 mm x 118 mm x 12.7 mm)	* Capacity:	Up to 300,000 vehicles or 21 days per study, whichever occurs first.
Weight:	1.3 lbs (0.59kgs)	Data Program/Read Rate:	115K~9600 baud RS-232 user selectable
Electronic PCB:	Conformal coated and water resistant	Commun. Link:	Standard RS-232 USB adapter optional
Operating Temperature:	-22°F to 167°F (-30°C to +75°C)	Real-Time-Clock:	Yr, Mo, Day, Hr, Min, Sec
Sensor:	GMR magnetic chip for Vehicle Magnetic Imaging	* Length Classification (% of Volume):	90% +/- 4 feet (1.22meters) 13 bins (user selectable length range)
Memory:	Micro Serial Flash : 3MB	* Speed Class (% of Volume):	90% +/- 4 mph (6.4kph) 15 bins (user selectable speed range)
Battery/Power:	Lithium Ion Rechargeable 3.0 - 4.20 vdc, 1900 mah at C/5 rate at 23° C Nominal voltage 3.70 vdc Up to 21 days before recharge Automatic overcharge protection Field replaceable by customer	Vehicle Count Determination:	99% Accuracy Automatic headway adjustment 2 - 120 mph (3.2-193 kph) <2 mph (3.2kph) recorded as stopped vehicle
Computed Values:	Imperial or Metric		* APPLIES TO MODEL NC-200 Specifications subject to change without notice



11 in. x 8 in. x 0.7 in.
(279 mm x 203 mm x 17.8 mm)

THE NC-100/200 PROTECTIVE COVER

The protective cover, specifically molded for the NC-100 and NC-200 series, is constructed to withstand the impact of heavy vehicles and damage from most chemicals such as oil and fuel. Placed over the NC-100/200, the cover is easily installed using a screw drill or powder activated nail gun. After the traffic study is complete, remove the cover and it is ready for use on another installation.

Quixote
Transportation Technologies, Inc.

WWW.QTTINC.COM



Distributed By:

PO Box 518 University Drive, Uniontown, PA 15401
Tel: (724)438-8750 Fax: (724)438-8769
Toll Free: (800)346-2025